

Regions Hospital Foundation's
Learn More, Live Well
Health Education Series presents



*Innovations in
Alzheimer's and Dementia
Research and Care*

May 5, 2010



Join experts from Regions Hospital's new Center for Dementia and Alzheimer's Care and world-renowned Alzheimer's Research Center to learn about their progressive care model. This model brings together the finest in research and clinical care to benefit patients, families and caregivers who are affected by dementia, stroke, Parkinson's, Alzheimer's and other diseases of the brain.

Innovations in Alzheimer's and Dementia Research and Care

Date: Wednesday, May 5, 2010

Time: 2:30 p.m. – 4:00 p.m.

Location: Town & Country Club
300 North Mississippi River Boulevard
St. Paul, MN 55104-4951

Appetizers will be provided.

Friends and colleagues are welcome.

RSVP by April 30

Email to RHF@healthpartners.com or call 651-254-2376

For directions and parking information, please visit: www.tcc-club.com.
Click on "About Us" and then click "Map/Directions."

Wednesday, May 5, 2010

Innovations in Alzheimer's and Dementia Research and Care

2:30 Registration (appetizers/beverages)

2:45 Program

Welcome & Opening Comments: Bret Haake, MD

- The dementia epidemic
- Relationship between research and clinical practice: Why our care model benefits the patient

Alzheimer's Research Center: Bill Frey, PhD

- Intranasal insulin improves memory, attention and functioning in patients with Alzheimer's disease in human clinical trials
- Development and testing of intranasal deferoxamine to treat Alzheimer's disease, stroke and other brain disorders
- Recent work conducted with collaborators in Germany that used non-invasive intranasal adult stem cells to treat Alzheimer's, Parkinson's and MS

Alzheimer's Research Center: Leah Hanson, PhD

- MN Memory Project

Center for Dementia and Alzheimer's Care: Pat Reyes, MD

- What happens in Alzheimer's disease and other dementias
- Treatment methods: New therapies being developed
- What we can do to preserve brain function

Q & A Session: Bret Haake, MD

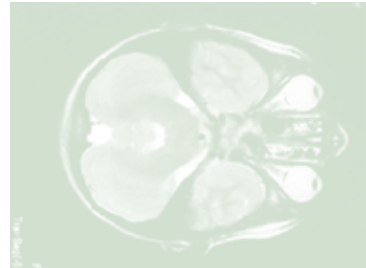
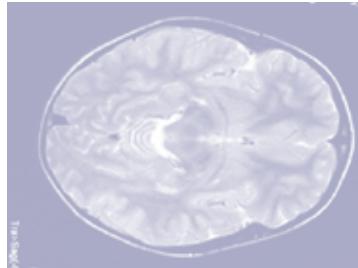
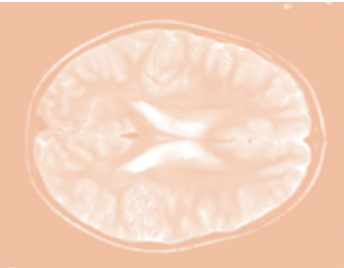
Closing Comments: Bret Haake, MD

- Economic impact
- Call to action (share our message with 1-2 interested friends/colleagues)

Speak with the Experts

- Attendees will have the opportunity to follow up directly with the experts in their areas of interest following the program

Event Speakers



Bret Haake, MD

Dr. Haake is the Assistant Medical Director of Neurosciences and the Department Head of Neurology at Regions Hospital. He specializes in disorders that affect the brain such as stroke, dementia, Parkinson's disease, multiple sclerosis, and epilepsy, and has directed clinics in dementia care for over a decade.

Bill Frey, PhD

Dr. Frey is Co-Director of the Alzheimer's Research Center at Regions Hospital; professor of Pharmaceutics and faculty member in Neurology, Oral Biology and Neuroscience at the University of Minnesota; and a consultant to the pharmaceutical and biotechnology industry. He also holds several patents.

Leah Hanson, PhD

Dr. Hanson is the Co-Director of the Alzheimer's Research Center at Regions. She is also the Vice-Chair of the Basic Science Research Subcommittee for HeathPartners Research Foundation and a member of the American Academy of Neurology and the International Society to Advance Alzheimer's Research and Treatment.

Pat Reyes, MD

Dr. Reyes is the Program Director for Regions' Center for Dementia and Alzheimer's Care. As a pioneer in the study of Alzheimer's disease and neurodegenerative disorders, he collaborates with the Alzheimer's Research Center to develop new approaches to diagnose, prevent and treat these illnesses.