

Total Cost of Care Overview for

All

Clinic: All  
Primary Care Specialty: All



Group  
NA

Product  
COMMERCIAL

Entity  
All

Condition  
OVERALL

Clinic  
All

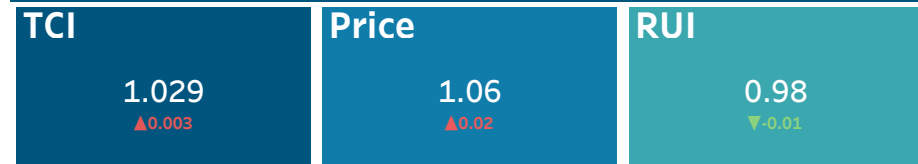
Specialty  
All

TCOC Summary Dashboard

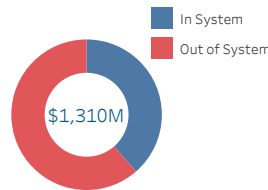
Rolling 12 Months: April through March - 2020, 2021, 2022

-Risk Adjusted Total Cost of Care Metrics  
-Total Spend including Clinics, Hospitals, RX and Referral Partners  
-Total Reimbursement Capped at \$125,000  
-Attributed, Commercial, Continuously Enrolled, Excluding Babies and 65+

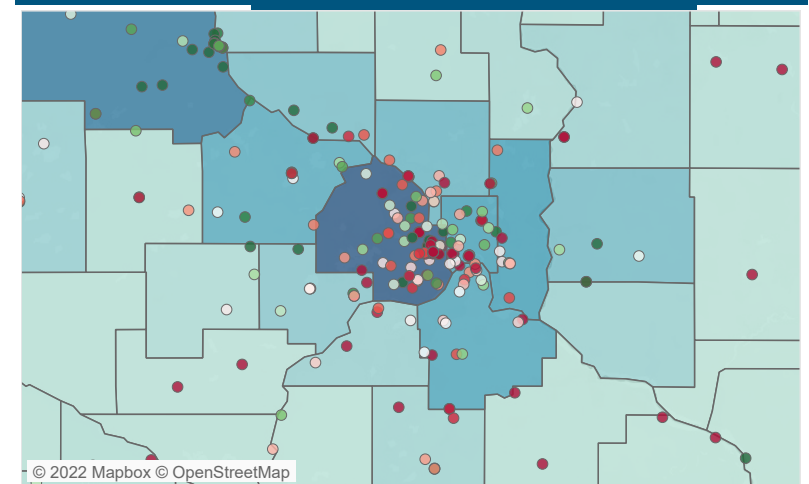
TCOC Summary [See Trend](#)



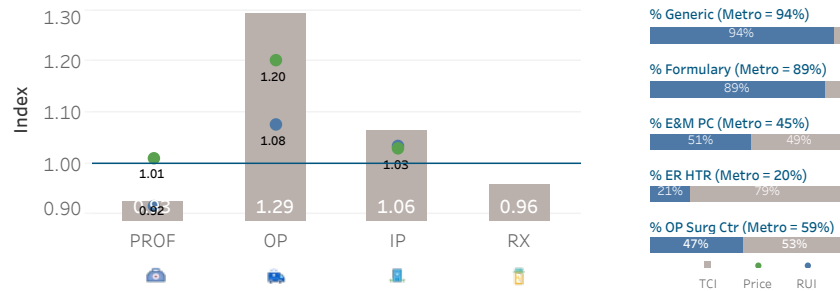
Member Count: 175,690  
Avg ACG: 0.98  
Total PMPM - Risk Adj: \$603  
Total Spend: \$1,309,730,834  
Members Over \$125K: 1,005



Clinic Summary [See Clinic Detail](#)



Place of Service Summary [See Trend](#)



Spend Distribution



Utilization Metrics [See Trend](#)

High Cost

Admits	1.01
IP Surgery	1.08
Emergency Department	1.08
Outpatient Surgery	1.08
Hightech Radiology (ER)	1.07
Hightech Radiology (Non-ER)	1.00

Patient Management

E&M Primary Care	1.02
E&M Specialty Care	0.81
Laboratory/Pathology	0.95
Standard Radiology	1.00
RX Count	1.02

Condition Summary

	Member Count	Avg ACG	TCI	Price	RUI	Total PMPM
OVERALL	175,690	0.98	1.03	1.06	0.98	\$592
ALL OTHER CONDITIONS	97,258	0.51	1.01	1.03	0.97	\$315
ARTHRITIS	7,442	2.18	1.12	1.08	1.03	\$1,686
ASTHMA	11,570	1.71	1.05	1.06	0.99	\$1,011
BACK PAIN	28,501	1.73	1.02	1.06	0.96	\$1,028
CHF	720	4.91	1.02	1.08	0.94	\$4,127
CHRONIC RENAL FAILU..	1,559	4.30	1.02	1.08	0.94	\$2,559
COPD	1,076	3.54	1.08	1.11	0.97	\$2,394
DEPRESSION	22,288	2.03	1.02	1.05	0.97	\$1,134
DIABETES	8,618	2.22	1.02	1.07	0.95	\$1,431
HYPERLIPIDEMIA	23,733	1.78	1.06	1.08	0.98	\$1,064
HYPERTENSION	25,617	1.87	1.06	1.08	0.98	\$1,194
ISCHEMIC HEART DISE..	2,794	3.20	1.06	1.09	0.96	\$2,341
OVERALL - PEDS	51,341	0.51	0.97	1.04	0.98	\$304
ALL OTHER CONDITION..	19,231	0.21	0.93	1.02	0.91	\$116

Total Cost of Care Overview for

All

Clinic: All  
Primary Care Specialty: All

TCOC Opportunity Summary

Rolling 12 Months: April 2021 through March 2022



Group  
NA

Product  
COMMERCIAL

Entity  
All

Condition  
OVERALL

Clinic  
All

Specialty  
All

-Risk Adjusted Total Cost of Care Metrics  
-Total Spend including Clinics, Hospitals, RX and Referral Partners  
- Total Reimbursement Capped at \$125,000  
-Attributed, Commercial, Continuously Enrolled, Excluding Babies and 65+

Total Cost of Care	Members	Total Spend	Total Cost Index	Dollar Reduction (1pt or 1.00)
	175,690	\$1,181M	1.03	\$34,000,000

Price Opportunity	Price Index	Dollar Reduction (1 pt or 1.00)
	1.06	\$65,000,000

Fee Schedule Opportunity	% of Total Spend	Price	Dollar Reduction (1 pt or 1.00)
<b>Professional</b>	<b>44.4%</b>	<b>1.01</b>	<b>\$2,550,000</b>
<b>Primary Care</b>	<b>10.5%</b>		
	2.8%		
	2.1%		
	1.1%		
<b>Specialty Care</b>	<b>32.7%</b>		
	2.8%		
	2.2%		
	1.9%		
<b>Inpatient</b>	<b>16.3%</b>	<b>1.03</b>	<b>\$11,000,000</b>
	7.4%		
	5.0%		
	2.7%		
<b>Outpatient</b>	<b>27.0%</b>	<b>1.20</b>	<b>\$57,000,000</b>
	6.9%		
	5.1%		
	3.2%		

Price Opportunity Detail	Total Procedures	OP Hosp Procedures	% of Procs in Surg Ctr	Total Opportunity
<b>Total OP Surgery Opportunity</b>	<b>24,780</b>	<b>13,013</b>	<b>47%</b>	<b>\$39,000,000</b>
COLONOSCOPY AND BIOPSY	3,005	1,517	50%	\$2,200,000
TLH W/T/O 250 G OR LESS	216	213	1%	\$1,700,000
KNEE ARTHROSCOPY/SURGERY	749	240	68%	\$1,500,000
COLONOSCOPY W/LESION REMOVAL	2,290	1,186	48%	\$1,200,000
NJX INTERLAMINAR LMBR/SAC	291	211	27%	\$1,000,000

Resource Use Opportunity	RUI Index	Dollar Reduction (1 pt or 1.00)
	0.98	\$13,000,000

Utilization Opportunity	Actual Utilization	Utilization Improvement to 1.00	RUI	Dollar Reduction to Avg (1.00)
<b>High Cost Utilization Measures</b>				
Admits	8,020	84	1.01	\$1,600,000
IP Surgery	1,852	145	1.08	\$5,200,000
Emergency Department	28,758	2,105	1.08	\$3,050,000
Outpatient Surgery	28,326	2,160	1.08	\$9,600,000
Hightech Radiology (ER)	8,950	582	1.07	\$255,000
Hightech Radiology (Non-ER)	33,514	0	1.00	\$0

Patient Management Utilization Measures	Actual Utilization	Utilization Improvement to 1.00	RUI	Dollar Reduction to Avg (1.00)
E&M Primary Care	404,554	9,116	1.02	\$2,000,000
E&M Specialty Care	382,903	0	0.81	\$0
Laboratory/Pathology	1,508,245	0	0.95	\$0
Standard Radiology	176,340	0	1.00	\$0
RX Count	2,005,043	40,192	1.02	\$2,750,000

Resource Opportunity Details	Actual Utilization	Utilization Improvement to 1.00	Index	Dollar Reduction to Avg(1.00)
<b>Admits*</b>				
Orthopedics	556	-78	1.35	\$3,364,000
Respiratory	832	-70	1.27	\$1,985,000
Circulatory	549	-42	1.26	\$1,652,000
Infectious/Parasitic	406	-15	1.21	\$471,000
Mental Health	612	-9	1.18	\$167,000

Outpatient Surgery*	Actual Utilization	Utilization Improvement to 1.00	Index	Dollar Reduction to Avg(1.00)
COLONOSCOPY AND BIOPSY	8,321	-578	1.25	\$863,000
INSERT CATHETER/ SPINE STIM, INJE..	1,462	-411	1.62	\$963,000
DEBRIDE WOUND/INFECTION/BURN	452	-291	3.27	\$469,000
DECOMPRESSION PERIPHERAL NERVE	396	-162	1.97	\$424,000
NON-OR THR NERVOUS SYSTEM PRO..	646	-122	1.44	\$209,000

\*ACO SmartCare Flag does not apply

Total Cost of Care Overview for

All

Clinic: All



Product  
COMMERCIAL

Group  
NA

Entity  
All

Condition  
OVERALL

Trended Utilization

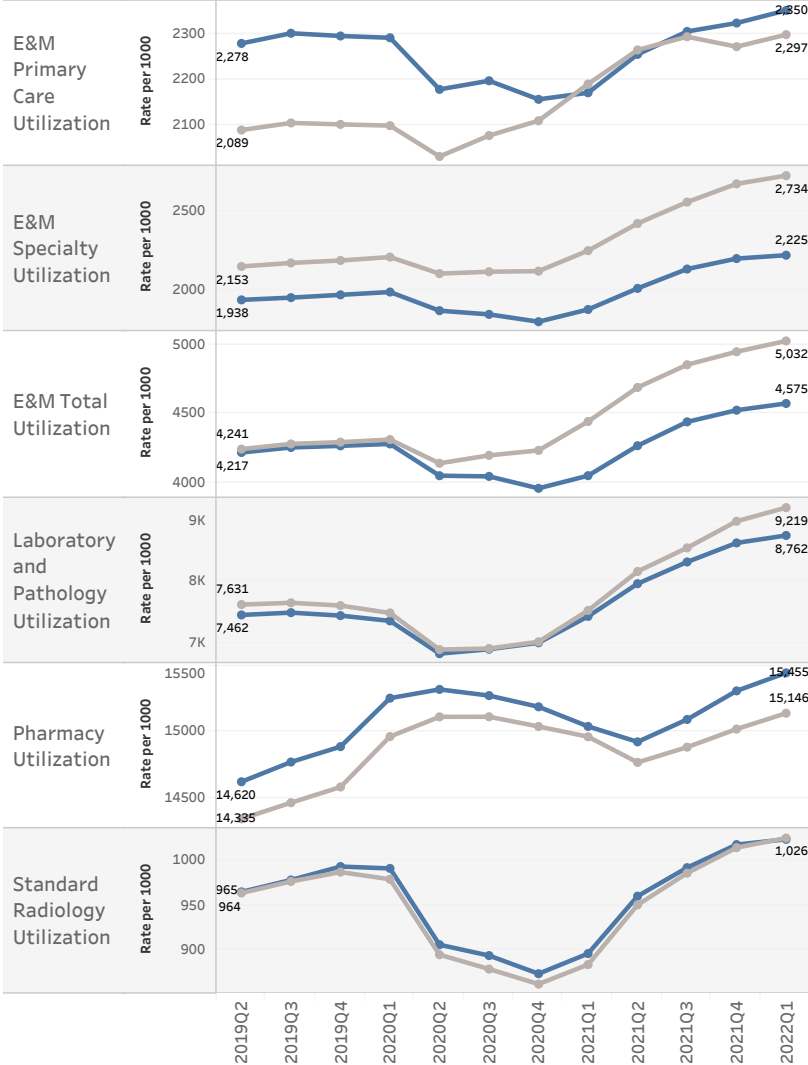
Rolling 12 Months: April through March - 2020, 2021, 2022

-Risk Adjusted Total Cost of Care Metrics  
-Total Spend including Clinics, Hospitals, RX and Referral Partners  
-Total Reimbursement Capped at \$125,000  
-Attributed, Commercial, Continuously Enrolled, Excluding Babies and 65+

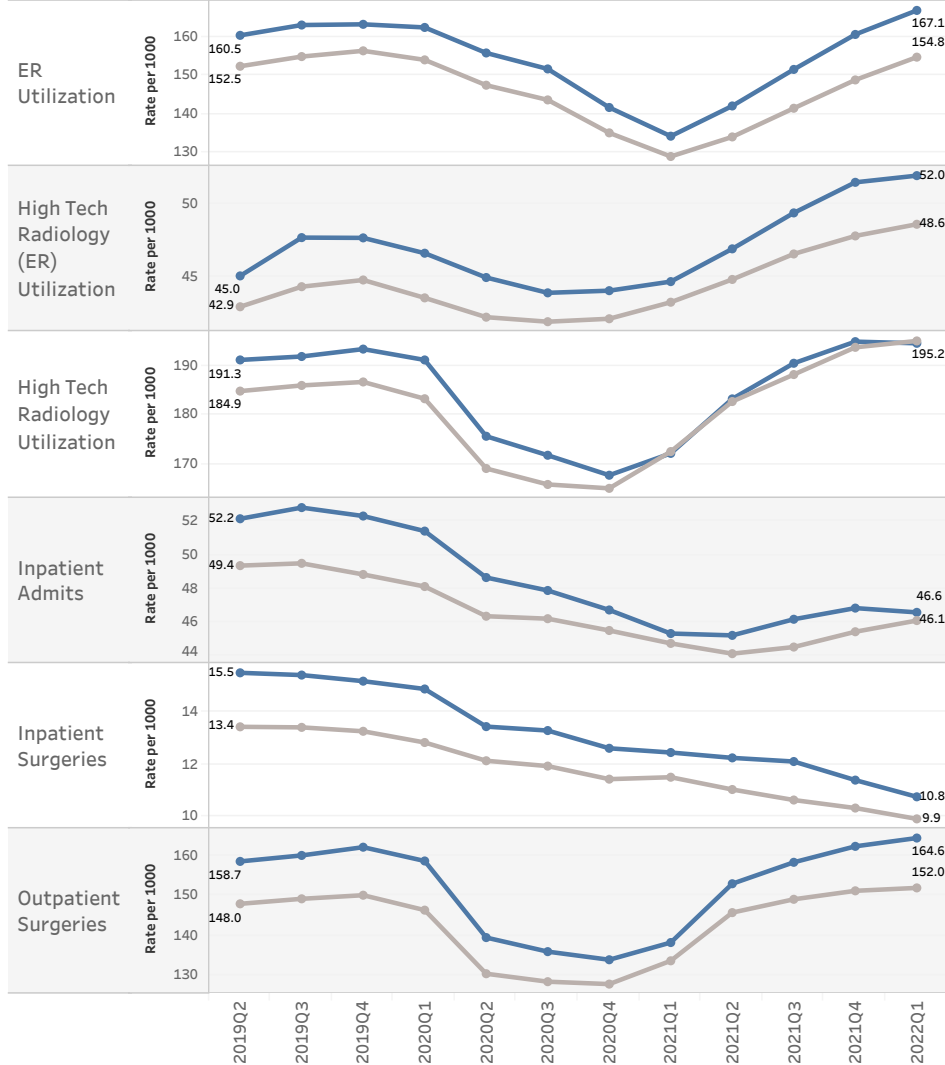
Clinic  
All

Metro Expected  
Rate per 1000

Patient Management Utilization



High Cost Utilization





# All

Clinic: All  
Primary Care Specialty: All

Group  
NA

Product  
COMMERCIAL

Entity  
All

Condition  
OVERALL

Clinic  
All

Specialty  
All

## Place of Service Opportunity

Rolling 12 Months: April 2021 through March 2022

-Risk Adjusted Total Cost of Care Metrics  
-Total Spend including Clinics, Hospitals, RX and Referral Partners  
-Total Reimbursement Capped at \$125,000  
-Attributed, Commercial, Continuously Enrolled, Excluding Babies and 65+

### Outpatient vs. Ambulatory Surgery Center Opportunity

\*Click on a procedure to limit OP Hospitals

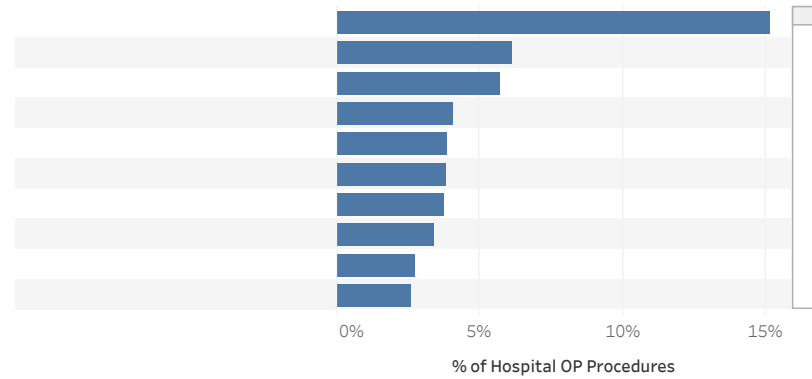
#### Top OP Procedures to Shift to ASC

Total Opportunity - \$39,000,000

	Total OP Surg Procedures	OP Hosp Procedures	% of Procs in Surg Ctr	Total Opportunity
<b>Grand Total</b>	<b>24,780</b>	<b>13,013</b>	<b>47%</b>	<b>\$39,000,000</b>
COLONOSCOPY AND BIOPSY	3,005	1,517	50%	\$2,200,000
TLH W/T/O 250 G OR LESS	216	213	1%	\$1,700,000
KNEE ARTHROSCOPY/SURGERY	749	240	68%	\$1,500,000
COLONOSCOPY W/LESION REMOVAL	2,290	1,186	48%	\$1,200,000
NJX INTERLAMINAR LMBR/SAC	291	211	27%	\$1,000,000
EGD BIOPSY SINGLE/MULTIPLE	1,488	792	47%	\$995,000
LAPAROSCOPIC CHOLECYSTECTOMY	227	182	20%	\$930,000
CREATE EARDRUM OPENING	413	251	39%	\$715,000
SHO ARTHRS SRG RT&TR CUF RPR	180	78	57%	\$680,000
CYSTO/URETERO W/LITHOTRIPSY	209	147	30%	\$650,000
LOW BACK DISK SURGERY	139	83	40%	\$625,000
LAP ING HERNIA REPAIR INIT	136	104	24%	\$610,000

### Top Outpatient Hospitals

\*Click on a hospital to limit OP procedures



### TCI Impact

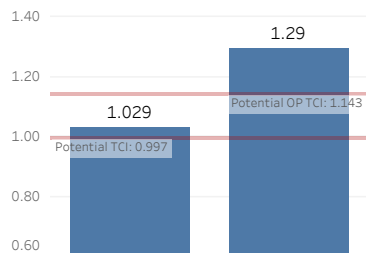
Place of service shift to surgery center

**Overall TCI**

Potential: -0.032

**OP TCI**

Potential: -0.151



#### OP Procedures in Surgery Center

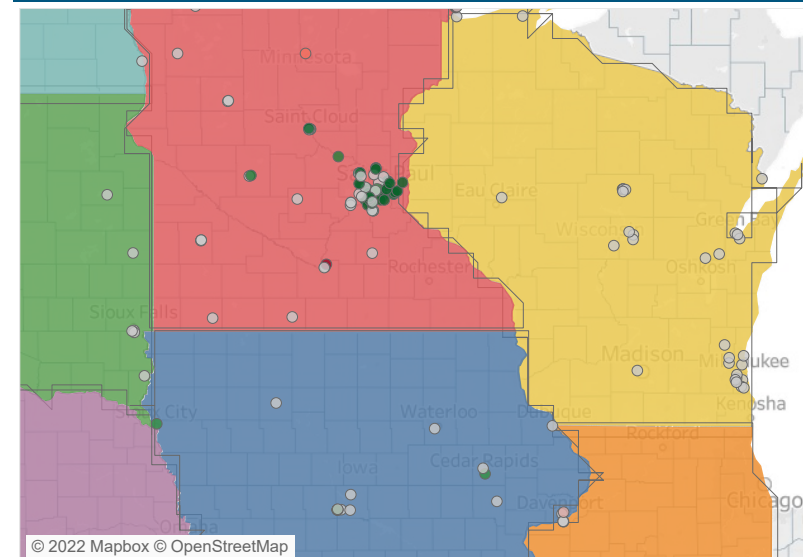
Metro % Surg Center: 59%

47%

53%

### Outpatient Surgery Center TCIs

See TCIs



# All

Clinic: All  
Primary Care Specialty: All

Group  
NA

Product  
COMMERCIAL

Entity  
All

Condition  
OVERALL

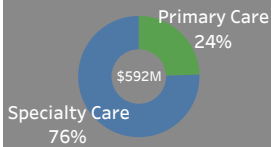
Clinic  
All

Specialty  
All

## Referral Partners - Professional

Rolling 12 Months: April 2021 through March 2022

- Total Reimbursement - Non Risk Adjusted, Non Capped  
- Attributed, Commercial, Continuously Enrolled, Excluding Babies and 65+



### Performance Results

Provider:  
All

Care Type:  
All

Specialty:  
All

Visit Type:  
All

TCI

See Trend

0.93  
▼ -0.01

Price

1.01  
▼ 0.00

RUI

0.92  
▼ -0.01

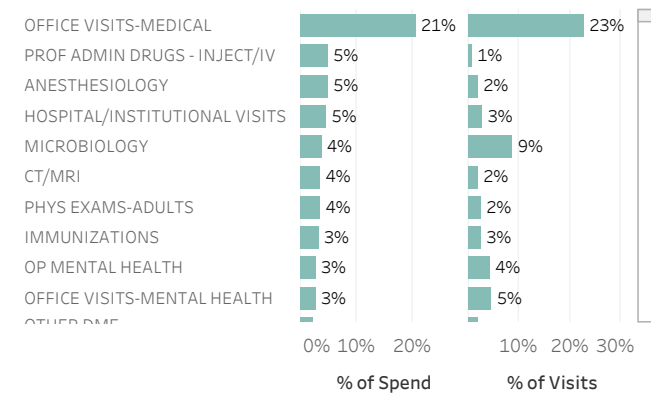
## Professional Partners

### Provider Spend Distribution

\*Click on provider to limit panels to the right

	Primary Care	Specialty Care	Grand Total
	25.2%	8.3%	12.4%
	17.6%	6.0%	8.8%
	0.2%	4.8%	3.7%
	0.1%	4.1%	3.1%
	1.0%	3.1%	2.6%
	9.6%	0.0%	2.3%
	0.0%	3.0%	2.3%
	1.5%	2.4%	2.2%
	5.4%	1.0%	2.1%
		2.6%	1.9%
	0.3%	2.2%	1.7%

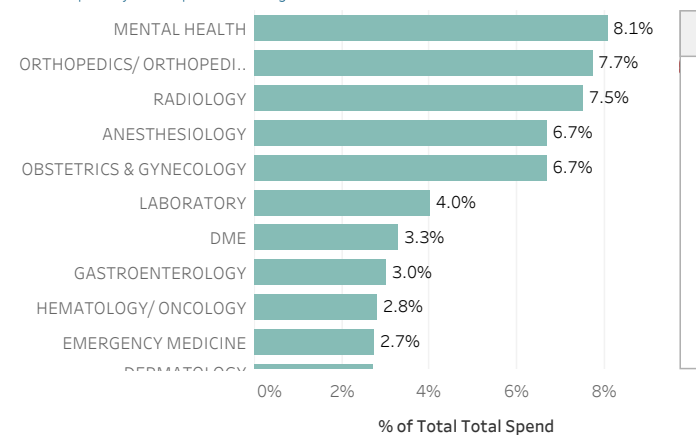
### Service Type



## Specialty Care

### Specialty Distribution

\*Click on specialty to limit panels to the right



### Specialty Care Providers

	% of Spend	% of Visits
	8.4%	5.9%
	6.1%	6.1%
	4.9%	1.4%
	4.2%	2.3%
	3.1%	1.5%
	3.0%	2.7%
	2.4%	0.9%
	2.4%	1.2%
	2.2%	2.4%
	2.1%	0.8%
	1.7%	0.9%
	1.6%	0.5%
	1.6%	1.5%
	1.5%	7.5%

Total Cost of Care Overview for



All

Clinic: All  
Primary Care Specialty: All

Top N  
All

Group  
NA

Product  
COMMERCIAL

Visit Type  
All

Entity  
All

Condition  
OVERALL


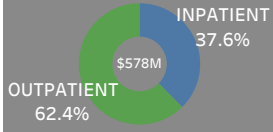
Referral Partners - Hospital

Rolling 12 Months: April 2021 through March 2022

- Total Reimbursement - Non Risk Adjusted, Non Capped  
- Attributed, Commercial, Continuously Enrolled, Excluding Babies and 65+

Clinic  
All

Specialty  
All

**Performance Results**

Place of Service:  
All

Hospital:  
All

Visit Category:  
All

Procedure:  
All

Visit Type:  
All

---

**TCI**

IP	OP
1.06	1.29
▲ 0.00	▲ 0.03

**Price**

IP	OP
1.03	1.20
▼ 0.01	▲ 0.01

**RUI**

IP	OP
1.03	1.08
▲ 0.01	▲ 0.02

Hospital Providers by Spend

See Hospital Table

	% of Spend	% of Visits	% of Surgeries
	0.2%	0.6%	0.2%
	0.3%	0.3%	0.3%
	10.3%	9.2%	9.0%
	8.2%	7.1%	3.6%
	5.6%	3.4%	4.3%
	5.3%	0.8%	2.1%
	4.7%	4.7%	2.2%
	0.2%	0.0%	0.0%

Treatment Category Spend

ETG Description	Hospital Spend	Hosp % of Spend	IP		OP	
			Admi..	OP Surg..	ED Visits	All Other
Pregnancy, with delivery	\$32,328,907	59%	50.2%	0.5%	0.7%	7.8%
Malignant neoplasm of breast	\$18,830,868	59%	4.6%	13.1%	0.6%	40.3%
Other infectious diseases	\$17,275,212	72%	62.1%	0.3%	5.6%	4.7%
Ischemic heart disease	\$17,022,653	76%	39.7%	14.0%	5.3%	17.5%
Joint degeneration, localized - back	\$16,487,030	54%	24.5%	20.3%	1.3%	8.2%
Septicemia	\$15,712,370	91%	89.6%		1.1%	0.7%

Visit Category

Hospital Category	% of Spend			% of Visits			
	0%	5%	10%	0%	5%	10%	15%
OFFICE VISITS-MEDICAL	9.5%			11.6%			
HOSPITAL/INSTITUTIONAL VISITS	5.2%			2.2%			
PROF ADMIN DRUGS - INJECT/IV	3.4%			0.4%			
CT/MRI	2.9%			1.2%			
CHRONIC INFLAMMATORY DISEASE	2.5%			0.3%			
PROF ADMIN DRUGS - CHEMO	2.4%			0.1%			
ANESTHESIOLOGY	2.2%			0.9%			
Maternity	2.1%			0.1%			
MICROBIOLOGY	2.1%			4.9%			

Procedure

	% of Spend	% of Visits
OFFICE O/P EST MOD 30-39 MIN	3.7%	3.7%
EMERGENCY DEPT VISIT	3.7%	1.2%
OFFICE O/P EST LOW 20-29 MIN	3.1%	4.7%
PSYTX W PT 60 MINUTES	1.3%	2.4%
HUMIRA(CF)	1.1%	0.1%
PREV VISIT EST AGE 40-64	1.0%	0.7%
SCR MAMMO BI INCL CAD	0.9%	0.8%
OFFICE O/P NEW MOD 45-59 MIN	0.9%	0.6%

# All

Clinic: All  
Primary Care Specialty: All

Group  
NA

Product  
COMMERCIAL

Entity  
All

Condition  
OVERALL

Clinic  
All

Specialty  
All

## RX Prescribing Summary

Rolling 12 Months: April 2021 through March 2022

- Attributed Members with an RX benefit  
- Non-Risk Adjusted, Non Capped  
- Attributed, Commercial, Continuously Enrolled, Excluding Babies and 65+



### Performance Results

Primary Specialty:  
Overall

Brand/Generic:  
All Drugs

Therapy Class:  
All Classes

Drug Name:  
All Drugs

### Metro % Generic

Primary Care	96%
Specialty Care	91%
Overall	94%

See RX Trend

# TCI

0.96

▲ 0.01

# RX Count

1.02

## RX Drug Category Distribution

See Form/Non Table

		Total Spend	Scripts	Cost/Rx
Primary Care	Total	\$39,113,332	1,401,127	\$40
	Formulary	\$36,986,218	1,384,751	\$39
	Non-Formulary	\$2,127,114	16,376	\$130
Specialty Care	Total	\$99,940,949	603,916	\$200
	Formulary	\$90,739,760	588,142	\$190
	Non-Formulary	\$9,201,189	15,774	\$587
Overall	Total	\$177,655,691	2,005,043	\$89
	Formulary	\$166,275,435	1,972,893	\$84
	Non-Formulary	\$11,380,256	32,150	\$354

## Top Drugs

See Drug Table

Drug Name	Total Spend	Scripts	Cost/Rx	Scripts/Person	% of Spend	% of Scripts
<b>Overall</b>	\$177,655,691	2,005,043	\$89	19.7	100.00%	100.00%
HUMIRA(CF)	\$19,165,364	2,842	\$6,744	8.9	10.8%	0.1%
ENBREL	\$7,928,559	1,428	\$5,552	9.0	4.5%	0.1%
OZEMPIC	\$4,936,753	6,450	\$765	6.8	2.8%	0.3%
adderall	\$4,302,689	18,218	\$236	7.1	2.4%	0.9%
TRULICITY	\$4,295,641	5,253	\$818	8.7	2.4%	0.3%
HUMIRA	\$3,904,399	633	\$6,168	8.1	2.2%	0.0%
COSENTYX	\$3,659,476	616	\$5,941	7.3	2.1%	0.0%
JARDIANCE	\$3,360,388	6,445	\$521	7.1	1.9%	0.3%
lantus	\$3,258,134	10,355	\$315	8.9	1.8%	0.5%
NORDITROPIN	\$3,048,410	731	\$4,170	12.0	1.7%	0.0%
DUPIXENT	\$3,041,539	975	\$3,120	7.8	1.7%	0.0%
SKYRIZI	\$2,938,282	468	\$6,278	8.4	1.7%	0.0%
AUBAGIO	\$2,865,920	362	\$7,917	9.5	1.6%	0.0%
concerta	\$2,799,488	6,990	\$400	6.1	1.6%	0.3%
HUMALOG	\$2,653,079	5,322	\$499	8.0	1.5%	0.3%
STELARA	\$2,560,982	214	\$11,967	3.1	1.4%	0.0%

5% 10% 15% 0% 2% 4%

## Therapy Class

See Therapy Class Table

	Scripts	% of Scripts	Cost/Rx	% of Spend	Total Spend	Scripts/Person
CHRONIC INFLAMMATOR..	12,429	0.62%	\$3,310	23.4%	\$32,555K	9.0
DIABETES	114,521	5.71%	\$238	10.8%	\$14,976K	16.1
DERMATOLOGY	46,298	2.31%	\$291	8.5%	\$11,873K	2.2
ONCOLOGY	7,846	0.39%	\$1,475	8.3%	\$11,572K	7.8
MULTIPLE SCLEROSIS	1,294	0.06%	\$6,329	5.2%	\$7,290K	9.8
OTHER	109,794	5.48%	\$62	4.7%	\$6,593K	3.7
STIMULANTS	67,699	3.38%	\$171	4.1%	\$5,668K	8.6
ASTHMA	72,187	3.60%	\$132	3.8%	\$5,333K	5.0

## Metro Top Drugs

Drug Name	Metro Cost/RX	Metro Scripts/Person	Metro % of Spend	Metro % of Scripts
<b>Overall</b>	\$95	19.7	100.0%	100.0%
HUMIRA(CF)	\$6,882	8.4	9.9%	0.1%
ENBREL	\$5,579	8.5	4.1%	0.1%
OZEMPIC	\$776	6.8	2.7%	0.3%
adderall	\$240	7.1	2.6%	1.0%
HUMIRA	\$6,320	8.7	2.3%	0.0%
TRULICITY	\$820	8.7	2.3%	0.3%
COSENTYX	\$6,096	8.1	2.2%	0.0%
TRIKAFTA	\$22,417	10.9	2.0%	0.0%
NORDITROPIN	\$4,292	11.3	1.9%	0.0%
lantus	\$299	8.9	1.8%	0.6%
STELARA	\$11,279	3.2	1.7%	0.0%
DUPIXENT	\$3,119	8.2	1.7%	0.1%
HUMALOG	\$474	8.2	1.6%	0.3%
JARDIANCE	\$523	7.0	1.6%	0.3%
SKYRIZI	\$6,213	8.6	1.5%	0.0%
concerta	\$407	6.1	1.5%	0.3%

0% 5% 10% 0% 2% 4%



# Total Cost of Care Overview for

## All

Clinic: All  
Primary Care Specialty: All



Group: NA  
Product: COMMERCIAL  
Entity: All  
Condition: OVERALL  
Clinic: All  
Specialty: All

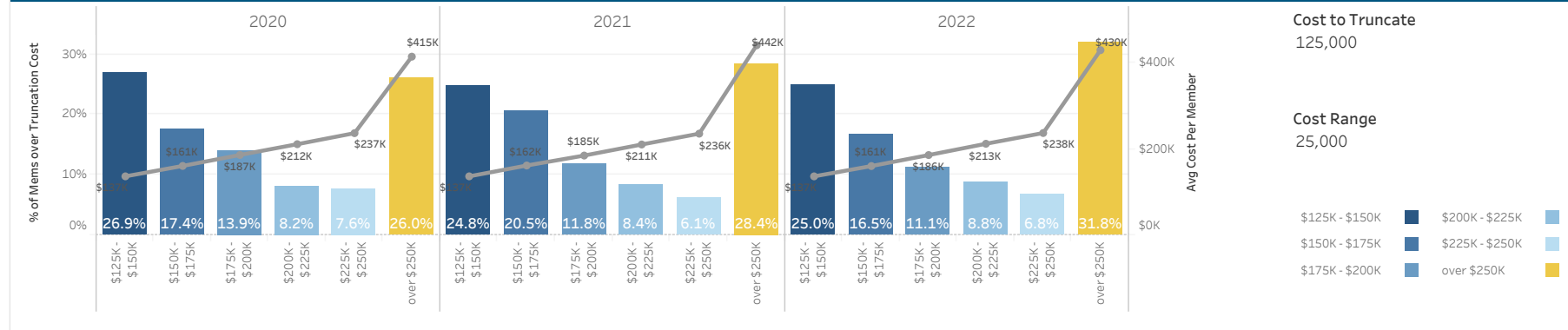
## High Cost Detail

Rolling 12 Months: April through March - 2020, 2021, 2022

-Total Spend including Clinics, Hospitals, RX and Referral Partners  
-Attributed, Commercial, Continuously Enrolled, Excluding Babies and 65+

### High Cost Distribution

See Trend

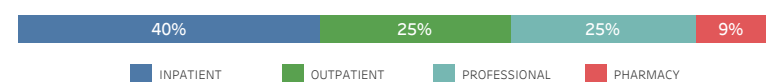


### Members Over \$125,000

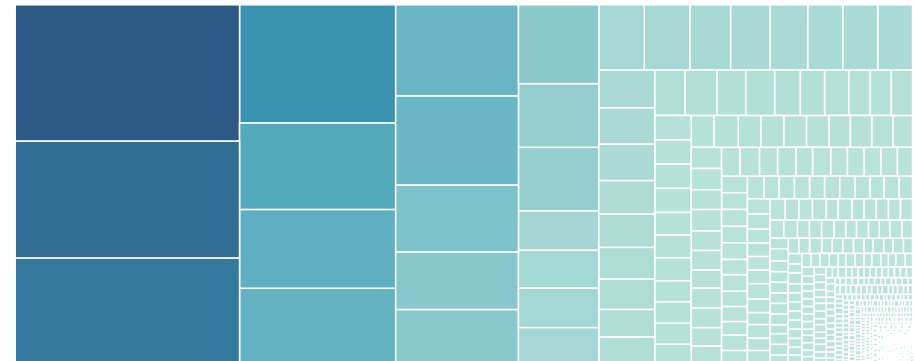
#### High Cost by Condition Category

Condition Category	Member Count	% of Spend	Total Spend	Avg Spend per Member
Grand Total	1,005	100%	\$254,475K	\$253,209
CANCER	365	29%	\$73,294K	\$200,806
NEUROLOGY	471	11%	\$26,924K	\$57,163
CARDIOLOGY	653	10%	\$25,853K	\$39,591
INFECTIOUS DISEASES	337	9%	\$21,991K	\$65,254
ORTHOPEDIC AND ARTHRITIC ..	649	8%	\$20,562K	\$31,683
GASTROENTEROLOGY	586	6%	\$15,082K	\$25,737
PSYCHIATRY/CHEMICAL DEPE..	570	5%	\$12,893K	\$22,619
PULMONOLOGY	455	4%	\$9,604K	\$21,109
ENDOCRINOLOGY	597	4%	\$9,246K	\$15,488
NEPHROLOGY	175	3%	\$8,230K	\$47,027
UNCATEGORIZED	940	2%	\$6,338K	\$6,742

#### High Cost Case Spend Distribution



#### Entity Distribution



#### Utilization

Admits	1,555	E&M Visits - PC	7,617
E&M Visits	29,874	E&M Visits - Spec	22,257
ED Visits	1,103	HTR - ED	17
OP Surg Procs	1,379	HTR - Non ED	789
Scripts	44,301		

# All

Clinic: All  
Primary Care Specialty: All

## Episode Treatment Classification Summary

Rolling 12 Months: April 2021 through March 2022

-Episodes ending within the TCOC reporting period  
-Episode spend includes: Clinics, Hospitals, RX and Referral Providers  
-Indexed to Metro Average

Group  
NA

Entity  
All

Clinic  
All

Condition  
OVERALL

Specialty  
All

### Performance Results

Specialty: All  
ETG: All

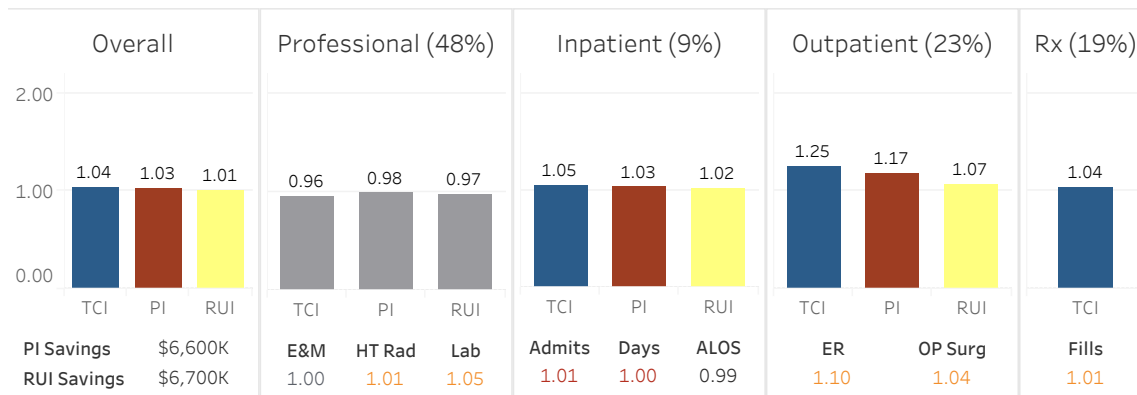
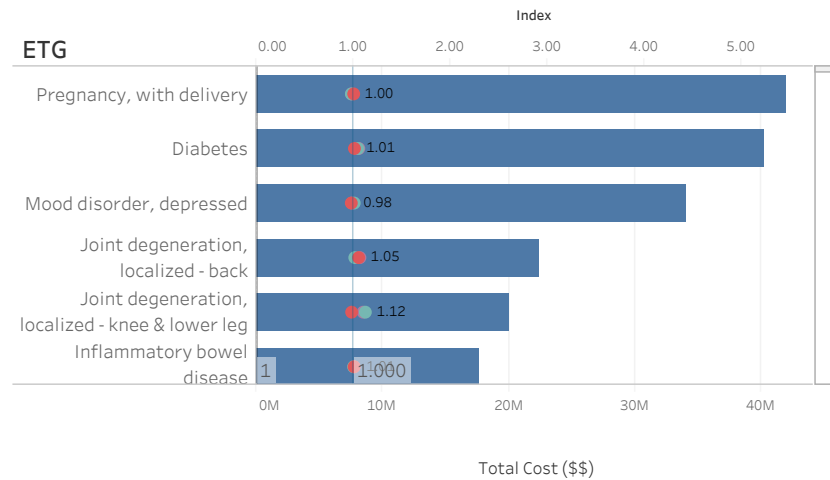
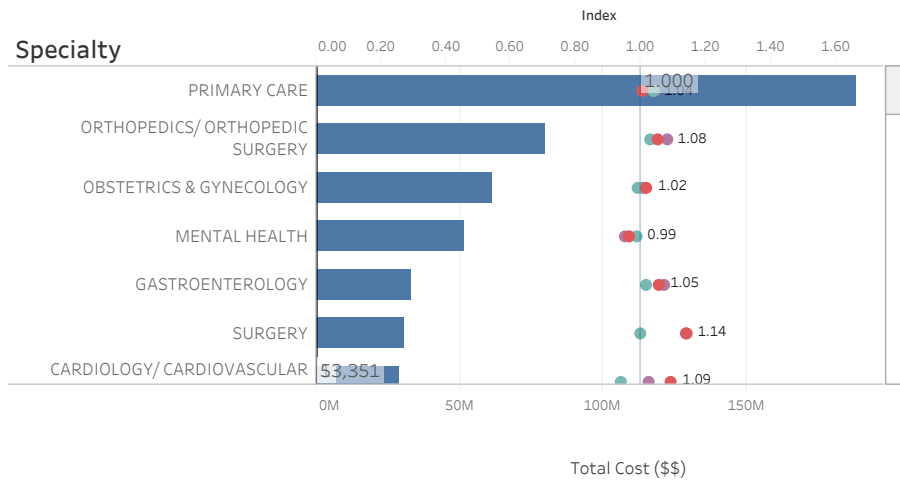
Total Spend: \$676,000,000

Episodes: 416,120

**\*\*Select a Specialty or ETG to view performance results\*\***



Sort by  
Total Cost



### Vendor List

All

Entity Name	% of Spend
	7.3%
	5.2%
	3.6%
	2.6%
	2.2%
	2.0%
	1.6%
	1.6%
	1.4%
	1.3%